

Image Analysis Tool

Observe	Reflect	Questions
<p>What words are on the image?</p> <p>Describe the buildings on the image.</p> <p>Describe the landscape and physical features in the image.</p>	<p>What can you infer about the location of this place?</p> <p>What can you infer about racism in this place?</p> <p>What is the most likely purpose (audience) for this image?</p> <p>What inferences or connections can you make about geography and racial segregation from the image?</p> <p>How do the clothing, <u>buildings</u>, transportation and/or landscape reflect the economic, political, or societal conditions for the time when the image was created?</p>	<p>What do you wonder about this image?</p> <p>What question would you ask the author of this image that is unanswered?</p>

Figure 3**+ Political Cartoon Analysis Tool**

Observe	Reflect	Questions
<p>Where was the cartoon published?</p> <p>Describe any references to a location or place.</p> <p>List any numbers or dates you see in the cartoon.</p> <p>List the geographic features you see? Are they in the foreground or <u>background</u>.</p> <p>Describe the people, transportation, buildings, and objects in the cartoon.</p> <p>What geographic event, issue, or problem does this cartoon illustrate?</p> <p>What objects shown in the cartoon have symbolic meaning?</p>	<p>Describe what is happening in the cartoon.</p> <p>Is there a cultural, geographic, or political bias shown in the cartoon?</p> <p>What geographic themes are represented in this cartoon?</p> <p>How do the clothing, buildings, transportation and/or landscape reflect the economic, political, or societal conditions for the time when the cartoon was made?</p> <p>What inferences or connections can you make about geography and racial segregation from the political cartoon?</p> <p>How are the spatial implications of the symbolic imagery?</p> <p>How does this cartoon connect to other documents or pictures?</p>	<p>What geographic questions would you like to ask the creator of this cartoon?</p>



Image Analysis Tool

Observe	Reflect	Questions
<p>What words are on the image? Describe the buildings on the image. Describe the landscape and physical features in the image.</p>	<p>What can you infer about the location of this place? What can you infer about racism in this place? What is the most likely purpose (audience) for this image? What inferences or connections can you make about geography and racial segregation from the image? How do the clothing, buildings, transportation and/or landscape reflect the economic, political, or societal conditions for the time when the image was created?</p>	<p>What do you wonder about this image? What question would you ask the author of this image that is unanswered?</p>

Note. From *The Library of Congress* [Photograph], by M. P. Wolcott, 1939, (<http://loc.gov/pictures/resource/fsa.8c10428/>)

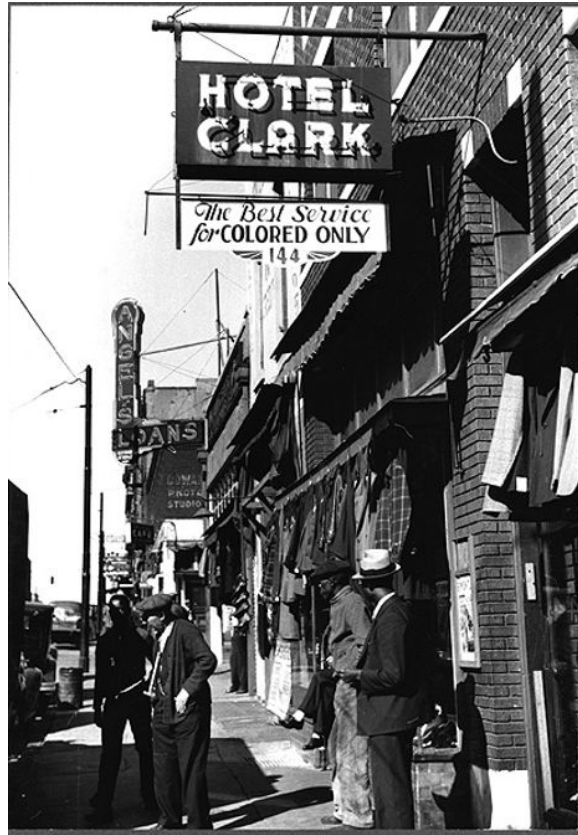


Image Analysis Tool

Observe	Reflect	Questions
<p>What words are on the image?</p> <p>Describe the buildings on the image.</p> <p>Describe the landscape and physical features in the image.</p>	<p>What can you infer about the location of this place?</p> <p>What can you infer about racism in this place?</p> <p>What is the most likely purpose (audience) for this image?</p> <p>What inferences or connections can you make about geography and racial segregation from the image?</p> <p>How do the clothing, buildings, transportation and/or landscape reflect the economic, political, or societal conditions for the time when the image was created?</p>	<p>What do you wonder about this image?</p> <p>What question would you ask the author of this image that is unanswered?</p>

Note. From *The Library of Congress* [Photograph], by M. P. Wolcott, 1939,
[\(http://loc.gov/pictures/resource/ppmsc.00197/\)](http://loc.gov/pictures/resource/ppmsc.00197/)



Image Analysis Tool

Observe	Reflect	Questions
What words are on the image? Describe the buildings on the image. Describe the landscape and physical features in the image.	What can you infer about the location of this place? What can you infer about racism in this place? What is the most likely purpose (audience) for this image? What inferences or connections can you make about geography and racial segregation from the image? How do the clothing, <u>buildings</u> , transportation and/or landscape reflect the economic, political, or societal conditions for the time when the image was created?	What do you wonder about this image? What question would you ask the author of this image that is unanswered?

Note. From *The Library of Congress* [Photograph], by J, Vachon, 1938,
 (<http://loc.gov/pictures/resource/fsa.8a03228/>)



Image Analysis Tool

Observe	Reflect	Questions
What words are on the image? Describe the buildings on the image. Describe the landscape and physical features in the image.	What can you infer about the location of this place? What can you infer about racism in this place? What is the most likely purpose (audience) for this image? What inferences or connections can you make about geography and racial segregation from the image? How do the clothing, buildings, transportation and/or landscape reflect the economic, political, or societal conditions for the time when the image was created?	What do you wonder about this image? What question would you ask the author of this image that is unanswered?

Note. From *The Library of Congress* [Photograph], by E. Buley, 1943,
[\(http://loc.gov/pictures/resource/cph.3b46051/\)](http://loc.gov/pictures/resource/cph.3b46051/)



Image Analysis Tool

Observe	Reflect	Questions
<p>What words are on the image? Describe the buildings on the image. Describe the landscape and physical features in the image.</p>	<p>What can you infer about the location of this place? What can you infer about racism in this place? What is the most likely purpose (audience) for this image? What inferences or connections can you make about geography and racial segregation from the image? How do the clothing, buildings, transportation and/or landscape reflect the economic, political, or societal conditions for the time when the image was created?</p>	<p>What do you wonder about this image? What question would you ask the author of this image that is unanswered?</p>

Note. From *The Library of Congress* [Photograph], by W. K. Leffler, 1962,
[\(https://www.loc.gov/pictures/item/2012649184/\)](https://www.loc.gov/pictures/item/2012649184/)



Note. From *The Library of Congress* [Photograph], by B. Shahn, 1938,
[\(http://loc.gov/pictures/resource/fsa.8a17588/\)](http://loc.gov/pictures/resource/fsa.8a17588/)

Image Analysis Tool

Observe	Reflect	Questions
<p>What words are on the image? Describe the buildings on the image. Describe the landscape and physical features in the image.</p>	<p>What can you infer about the location of this place? What can you infer about racism in this place? What is the most likely purpose (audience) for this image? What inferences or connections can you make about geography and racial segregation from the image? How do the clothing, buildings, transportation and/or landscape reflect the economic, political, or societal conditions for the time when the image was created?</p>	<p>What do you wonder about this image? What question would you ask the author of this image that is unanswered?</p>



Note. from *The Library of Congress* [Political Cartoon], by H. Block, 1962
<https://www.loc.gov/exhibits/brown/images/br0169s.jpg>

Figure 3

+ Political Cartoon Analysis Tool

Observe	Reflect	Questions
<p>Where was the cartoon published?</p> <p>Describe any references to a location or place.</p> <p>List any numbers or dates you see in the cartoon.</p> <p>List the geographic features you see? Are they in the foreground or <u>background</u>.</p> <p>Describe the people, transportation, buildings, and objects in the cartoon.</p> <p>What geographic event, issue, or problem does this cartoon illustrate?</p> <p>What objects shown in the cartoon have symbolic meaning?</p>	<p>Describe what is happening in the cartoon.</p> <p>Is there a cultural, geographic, or political bias shown in the cartoon?</p> <p>What geographic themes are represented in this cartoon?</p> <p>How do the clothing, buildings, transportation and/or landscape reflect the economic, political, or societal conditions for the time when the cartoon was made?</p> <p>What inferences or connections can you make about geography and racial segregation from the political cartoon?</p> <p>How are the spatial implications of the symbolic imagery?</p> <p>How does this cartoon connect to other documents or pictures?</p>	<p>What geographic questions would you like to ask the creator of this cartoon?</p>